

NEWSLETTER

Updates of the Week

12th December 2024



**THE MEGHALAYA LIVELIHOODS AND ACCESS TO
MARKETS PROJECT (MEGHA-LAMP)**



**THE MEGHALAYA LIVELIHOOD IMPROVEMENT
THROUGH FOREST ENHANCEMENT PROJECT (MEGLIFE)**



**PROTECTION OF VULNERABLE CATCHMENT AREAS IN
MEGHALAYA**



SUSTAINABLE LAND MANAGEMENT MEGHALAYA



INSTITUTE OF NATURAL RESOURCES (INR)



**FARMERS' COLLECTIVIZATION FOR UPSCALING OF
PRODUCTION AND MARKETING SYSTEMS (FOCUS)**



**THE MEGHALAYA BASIN MANAGEMENT AGENCY
(MBMA)**



**THE MEGHALAYA BASIN DEVELOPMENT AUTHORITY
(MBDA)**

MEGHALAYA LIVELIHOODS AND ACCESS TO MARKET PROJECT



INRM * RF * ISC&ED

Megha **LAMP**
Meghalaya Livelihoods Access to Market Project
In Partnership With IFAD

MEGHALAYA LIVELIHOODS AND ACCESS TO MARKET PROJECT

Highlights of Workshops & Meetings



A Review Meeting for the IVCS Managers of the 50 Top-Performing IVCS under MLAMP was held on December 5 and 6, 2024, at Lamjingshai Youth Centre, Pohkseh.



On **December 10, 2024**, DPMU, West Garo Hills, organized **One-Day Orientation Programmes for Paravet Service Providers** from Tikrikilla Block and **Livestock Service Providers** from Selsella Block. The sessions focused on phase-wise fund releases, utilization of zero-interest revolving funds, and the timely submission of Utilization Certificates (UCs). Participants were also briefed on their roles and responsibilities, repayment procedures, and the alignment of fund utilization with their business plans.



A **One-Day Workshop on Group Facilitator Assessment** was conducted at Orchid, Selsella Block. A similar programme was also organized at Dadenggre, West Garo Hills, for **16 Group Facilitators**.

MEGHALAYA LIVELIHOODS AND ACCESS TO MARKET PROJECT

Highlights of Training



On **December 7 and 9, 2024**, the National Institute of Food Technology, Entrepreneurship, and Management (NIFTEM), Guwahati, in collaboration with MBMA and DPMU, South Garo Hills, organized a **Food Processing Training at Rongara Prime Hub, South Garo Hills**. The training targeted **32 women** members of the Rongara Agro Food Processing Cooperative Society Ltd. and focused on techniques for producing jam, jelly, candy, and juice. These skills aim to enhance the society's product portfolio and empower the women with better opportunities.



A **Five-Day Residential Training on Cashew Value Addition** was conducted from **November 25 to 29, 2024, at Rongram Prime Hub, West Garo Hills**. The training was jointly organized by MBMA and the Directorate of Horticulture, Government of Meghalaya, in collaboration with the All Garo Hills Multipurpose Cooperative Society (AGHMPCS). Dr. Bala Subramanian, Principal Scientist from ICAR-DCR, Puttur, Karnataka, served as the resource person for the programme.



MegLIFE

Meghalaya Livelihood
Improvement through Forest
Enhancement Project (MegLIFE)



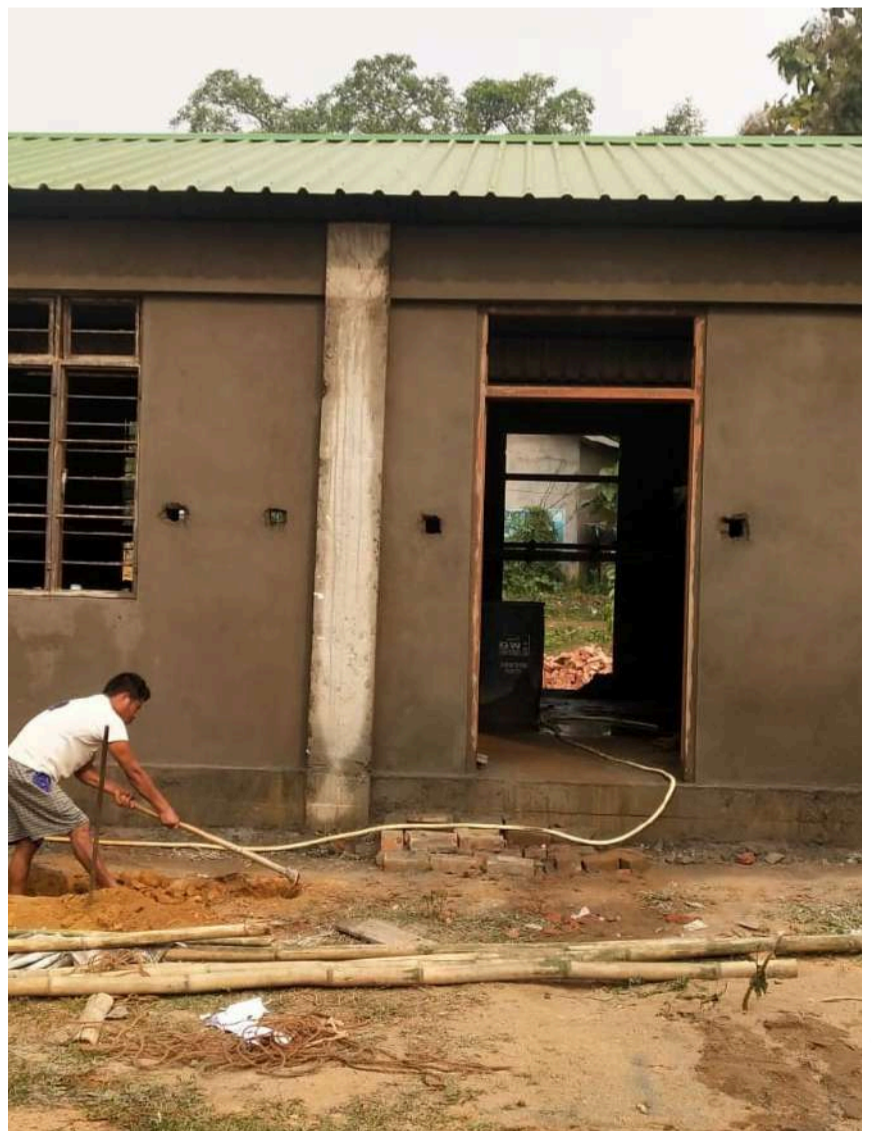
MEGHALAYA LIVELIHOOD IMPROVEMENT THROUGH FOREST ENCHANCEMENT PROJECT

Maize Harvested via Agroforestry Model-5 in Emandurabanda



For the first time, a landowner in Emandurabanda VPIC, Group 2 of South Garo Hills, has harvested maize from Agroforestry Model 5, which combines short-term crops like maize, medium-term crops such as pineapples, and long-term fruit trees like mango and orange. This approach signifies a notable advancement in sustainable agroforestry practices.

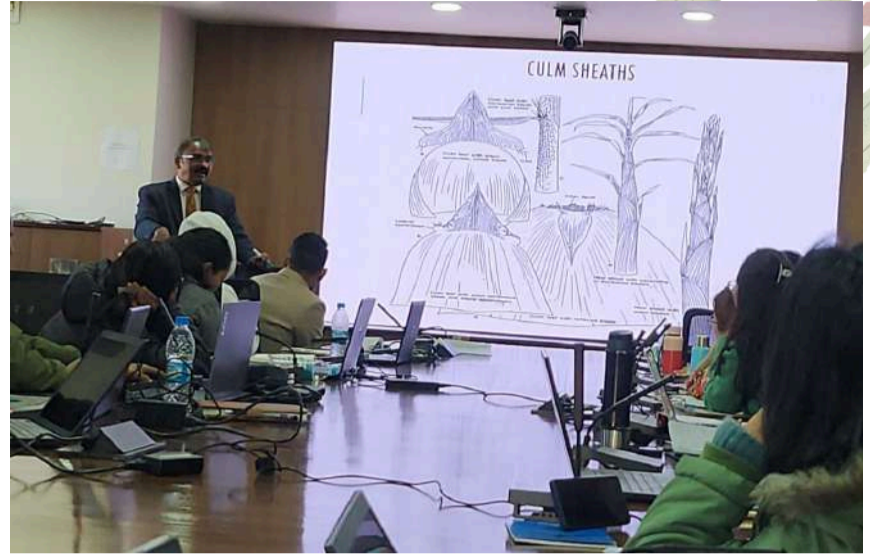
Entry Point Activities



Phase 2 of Belguri Community Hall and Phase 1 of Rangtapgre Community Hall.

MEGHALAYA LIVELIHOOD IMPROVEMENT THROUGH FOREST ENHANCEMENT PROJECT

Bamboo Training for Livelihood Improvement



A two-day Training of Trainers (ToT) on "Propagation and Utilization of Bamboo for Livelihood Improvement" was held on December 10-11, 2024. The session, led by Shri G.S. Raju, a project management consultant with the MegLIFE project, covered methods for cultivating bamboo, identifying various species, and exploring their uses. The training was valuable for IGA staff, including BPMs and DPMs, who are now expected to raise community awareness about bamboo and establish bamboo nurseries.



Protection of Vulnerable Catchment Areas in Meghalaya (MegARISE)



PROTECTION OF VULNERABLE CATCHMENT AREAS IN MEGHALAYA

Village Level Micro Action Plan (VLAMP) Preparation



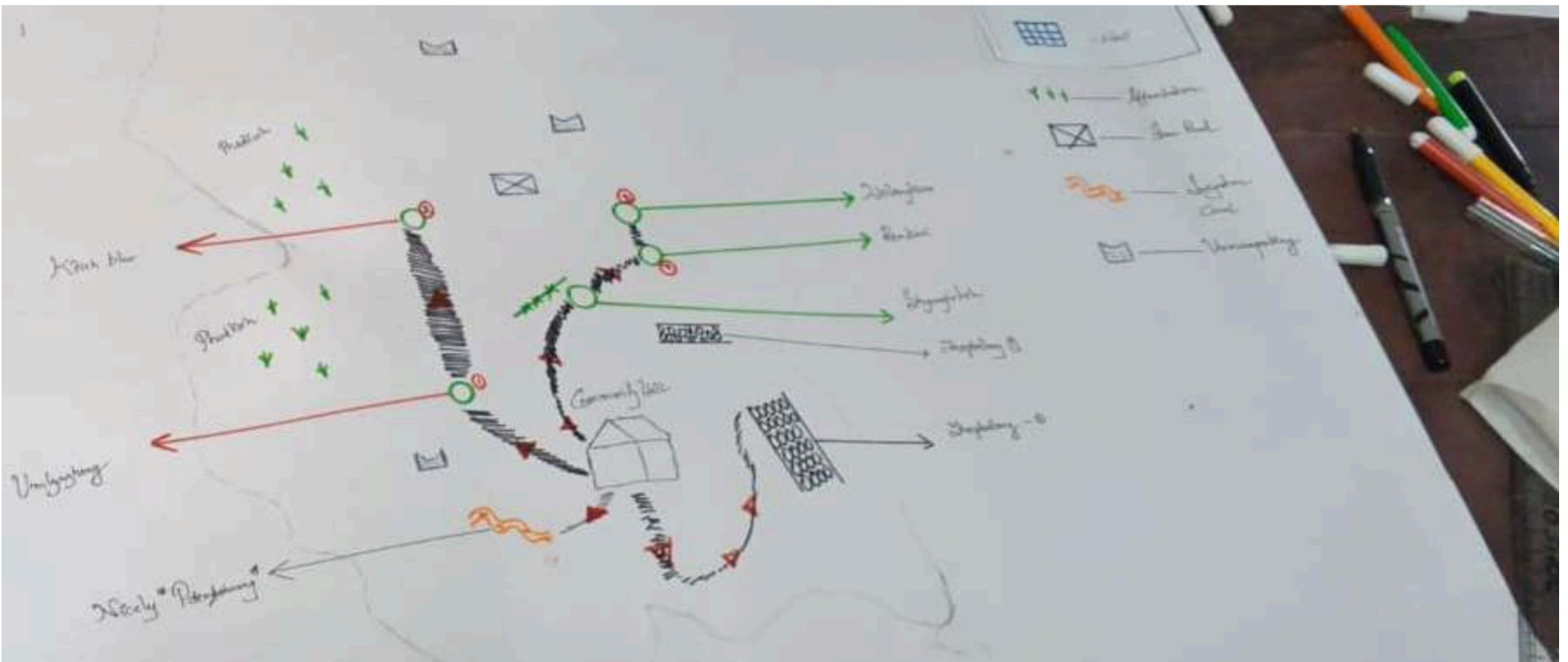
The VLAMP programme was successfully conducted in Myllichem Marbaniang village, under Myllichem Block on the 27th Nov 2024



The East Khasi Hills CMU successfully carried out the Village Level Micro Action Plan (VLAMP) activities in Mawkhanpasir on the 6th Dec 2024, in collaboration with representatives from the block office. A participatory approach was adopted to identify key priority interventions, where 26 beneficiaries offered their land for plantation activities. The Proposed Interventions for Construction of check dams for water conservation and erosion control. Installation of RCC water tanks for enhanced water storage etc. This initiative highlights the collaborative efforts towards sustainable development in the community.

PROTECTION OF VULNERABLE CATCHMENT AREAS IN MEGHALAYA

PRA at Umiew Catchment



The Project Manager CMU Umiew East Khasi district addressed the Exercise of PRA before its commencement to the villagers VPIC and EC members of lewpomtiah.

PROTECTION OF VULNERABLE CATCHMENT AREAS IN MEGHALAYA

Nagaland FBMP Team's Exposure Visit to Meghalaya



A 3-day knowledge exchange adventure across Meghalaya's villages by the FBMP Nagaland team.. On the first day of their visit to Laitpynter Lumpata under Mylliem Block the team had a chance to see the FPA contest-2. On the following day, the team had a visit to Mawkyrdep and Tynring villages. The visit was to see the insights of successful implementation of various sustainable practices under the MCLLMP and MegLIFE project, fostering knowledge exchange and hands-on learning. The team also had the opportunity to review the various registers maintained by the Village Natural Resource Management Committee (VNRMC), the SALT farm at Tynring village, where where one of the community member shared her experiences of combating soil erosion using nitrogen-fixing plants under the SALT model. The day concluded with a wrap-up meeting at the MegARISE office. .

GREEN⁺

MEGHALAYA

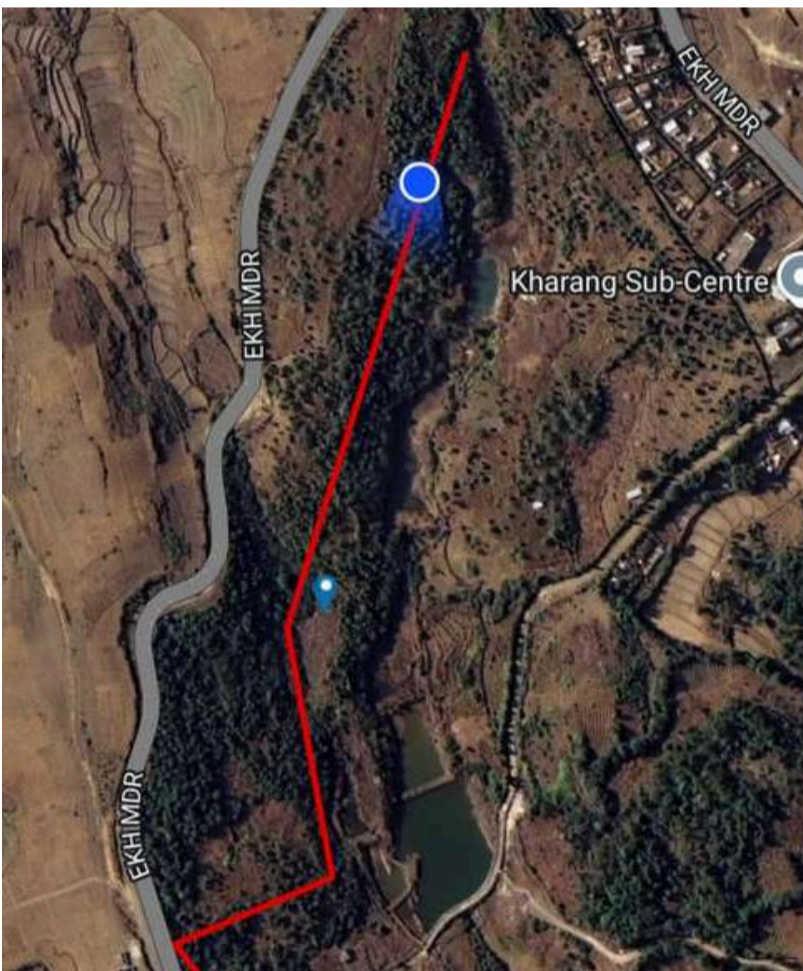
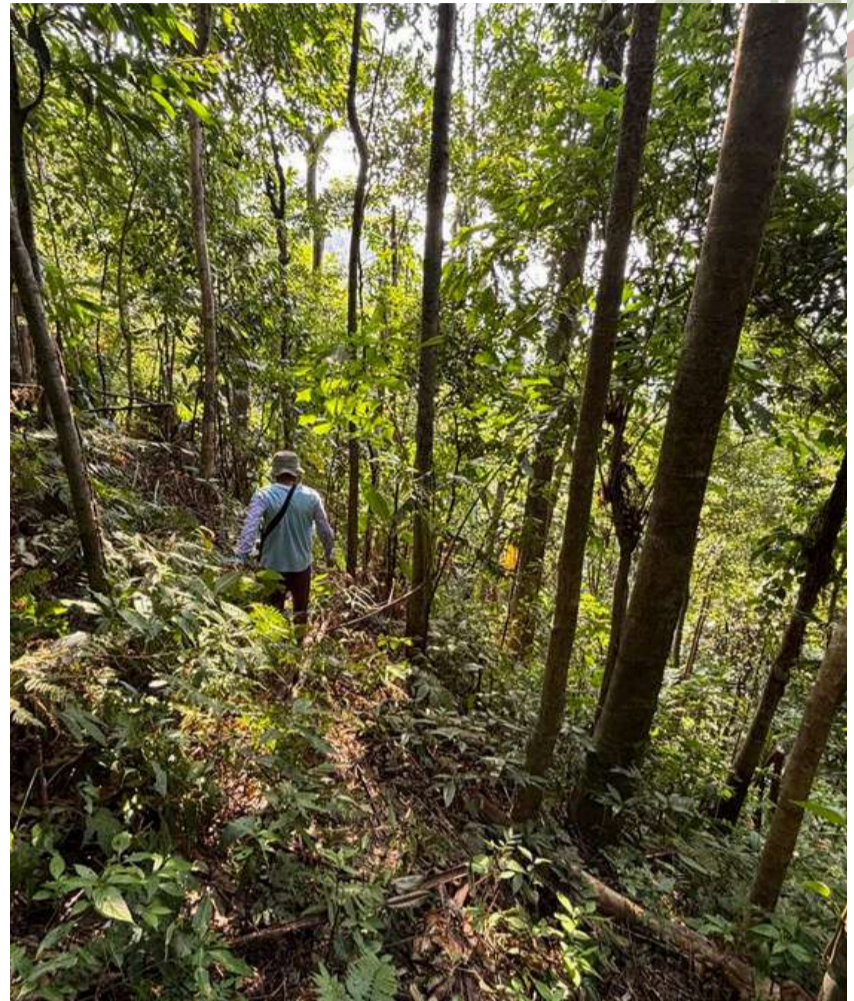
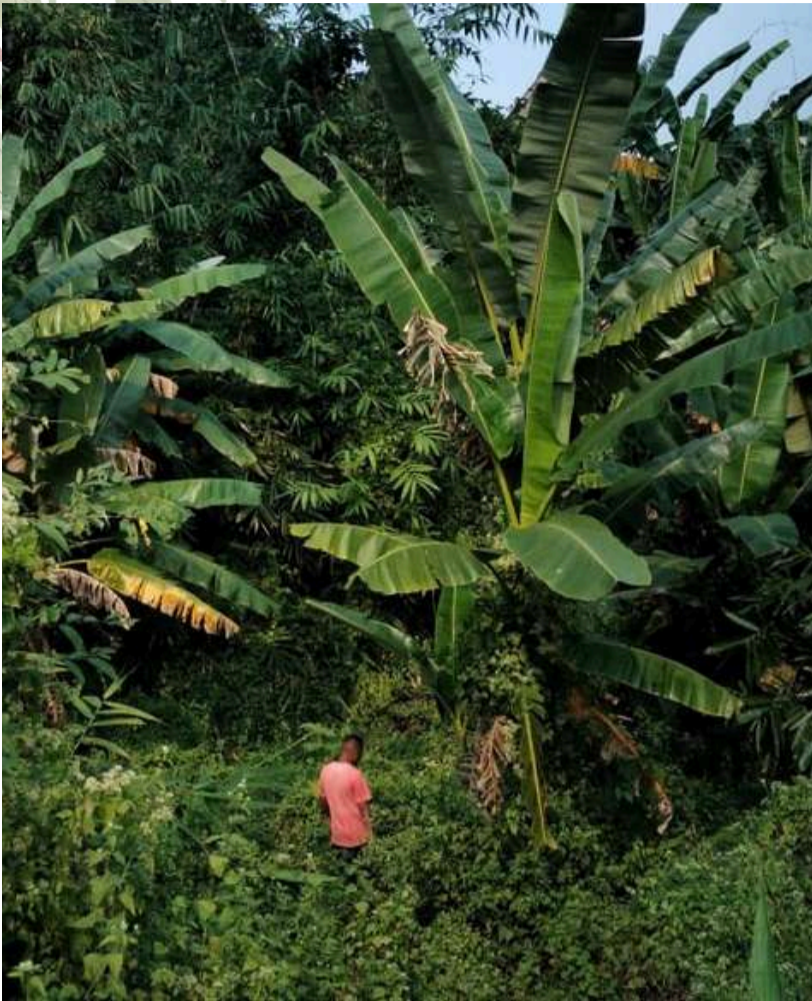
Grassroot Level Response towards
Ecosystem Enhancement and
Nurturing Meghalaya

Payment for Ecosystem Services (PES)



PAYMENT FOR ECOSYSTEM SERVICES

Monitoring Reporting and Verification activities conducted by the GFAS



The MRV (Monitoring, Reporting, and Verification) activity was carried out across several blocks and villages, spanning a vast geographical area that includes the following locations: Arai Apal VPIC and Upper Sambrak VPIC in Kharkutta Block, Matchakolgre in Tura Block, Rompara VPIC in Resubelpara Block, Dambuk Atong VPIC in Rongara Block, Kudengrim VPIC in Amlarem Block, Jelbongpara VPIC in Betasing Block, Lyngkyrdem village in Pynursla Block, Mawmluh village in Shella Bholaganj Block, Suchen village in Khliehriat Block, Mawrah village in Khadarshnong-Laitkroh Block, Jakhong village in Mairang Block, Nongma village in Mawshynrut Block, Samandalgre village in Rerapara Block, Mawkyllei village in Mawthadraishan Block, Mawkliaw village in Shella Bholaganj Block, Darenggre village in Dadenggiri Block, Ravagre in Tikrikilla Block, Chengkurigre village in Gambegre Block, Lawbyrtun village in Mawthadraishan Block, Lura village in Saipung Block, Jaralood village in Amlarem Block, Mawphanniew village in Mairang Block, Wahsarang

village in Khliehriat Block, Rngad village in Khliehriat Block, Maguapara village in Dalu Block, Chandigre village in Rongram Block, Kilarina Aruakgre in Resubelpara Block, Moobakhon village in Thadlaskein Block, Ktiehthawiar village in Mawshynrut Block, Rangweng village in Mawsynram Block, Pomblang village in Mawsynram Block, Ruga Donigre village in Gasuapara Block, Upper Rongbu village in Kharkutta Block, Laitnamlang village in Mawthadraishan Block, Rongbakgre village in Betasing Block, Selbalgre village in Dalu Block, Patharlyndan village in Mairang Block, Damit Dangra village in Resubelpara Block, Nongrim Jirang village in Jirang Block, Mawpen village in Mawsynram Block, and Nongshillong village in Mawthadraishan Block.

SUSTAINABLE LAND MANAGEMENT MEGHALAYA PROJECT (SLM)



SUSTAINABLE LAND MANAGEMENT MEGHALAYA PROJECT



WORKSHOP TO DISCUSS STRATEGIES AND WAY FORWARD

On 13 December 2024, the PMU held a one-day workshop on implementation strategies and the way forward at the Scouts and Guides Hall, Pine Mount School Road. Present at the workshop were Shri. AS Suting, Addl. Project Director, SLM, Shri. D. Rudra, CFO, MBMA, along with partner agencies DoH, BRDC, and MSLRS, field engineers, and the SPMU and DPMU project staff.

The workshop aimed to inform stakeholders that the concerned IVCS/FPO/VO will receive hand-holding and support from relevant project personnel, including IVCS managers, Group Facilitators, FOCUS Volunteers, and Farm Managers, depending on the project area. This support will primarily focus on implementation activities such as book-keeping, monitoring, and providing technical expertise on infrastructure and irrigation.

Knowledge Management
knowledge.mbda@gmail.com

FOLLOW US ON

